



## JAN SAWKA: THE PLACE OF MEMORY (THE MEMORY OF PLACE)

Curated by Hanna Maria Sawka and Dr. Frank Boyer

February 8 – July 12, 2020

Morgan Anderson Gallery & Howard Greenberg Family Gallery



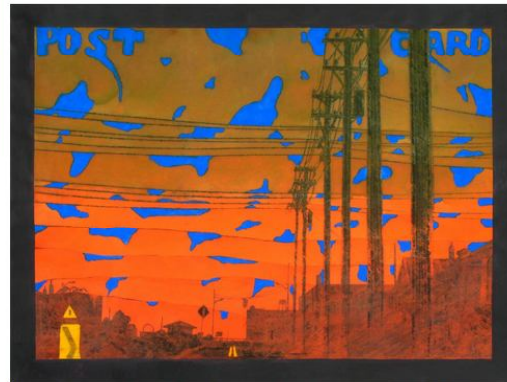
Jan Sawka, *Post Card #36* (from the series "Post Cards"), 1987–89, printed 1990, drypoint etching on paper, collection Samuel Dorsky Museum of Art, gift of the Dorsky Gallery Curatorial Programs, 2007.010.022

Jan Sawka (1946-2012) was a noted contemporary artist of Polish origin and global reach. His work is in the collections of over 60 museums worldwide. Sawka lived and worked in the Mid-Hudson Valley from 1985 until his death, conceiving of and producing many of his most notable works in his High Falls, NY, studio.

This exhibition is made up of works that illuminate two aspects of his practice, his fascination with human consciousness, in this case, with memory, and his interest in place, and the places through which a human life passes. Sawka's working method and artworks are truly visionary, in the sense that he always

worked from mental images. Every work he did is open to his thoughts, his emotions, his mental associations, and, above all to memory.

This exhibition features paintings and etchings that illuminate Sawka's visual explorations of the phenomenon of memory, works whose subject matter is the landscape of the Mid-Hudson Valley, and works that were created in his High Falls studio that are based in the memories of places that he "passed through." Many of these images express a deep empathy and the sense of loss that only exile can bring, leavened by an expansive sense of the beauty that art and nature make available to human beings. The exhibition will include works by the artist from a variety of private collections and from The Dorsky permanent collection.



Jan Sawka, *Post Card #19*, (from the series "Post Cards"), 1987–89, printed 1990, drypoint etching on paper, collection Samuel Dorsky Museum of Art, gift of the Dorsky Gallery Curatorial Programs

©2019 Samuel Dorsky Museum of Art

State University of New York at New Paltz  
SUNY New Paltz 1 Hawk Drive, New Paltz, NY 12561  
845.257.3844

For more information contact us at [sdma@newpaltz.edu](mailto:sdma@newpaltz.edu)